

4X M3x0.5 THREAD  
SEE NOTE 2

( $\phi 8.00$ )

( $\phi 35.800$ )

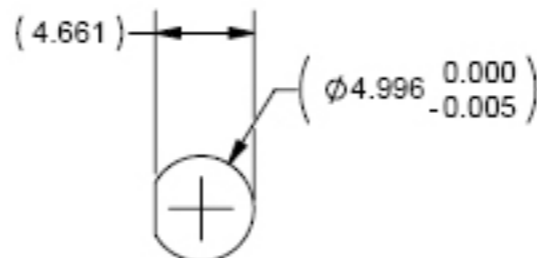
FRONT VIEW

(R1.850±0.10)

INCLUDES END PLAY, SEE NOTE 5  
(18.74<sup>+0.34</sup><sub>-0.40</sub>)

5.20  
MAXIMUM DEPTH OF  
MOUNTING HARDWARE

SECTION A-A  
SCALE 3 : 1



WIRE ENDS ARE TINNED

(8  
5)

(42  
36) SEE NOTE 4

PHASE B  
PHASE A  
PHASE C

( $\phi 8.00$ )

REAR VIEW

SIDE VIEW

NOTES:

1. SHAFT ROTATION CLOCKWISE VIEWED FROM REAR.
2. MOUNTING HARDWARE NOT TO EXTEND BEYOND 5.20mm INTO MOTOR FROM MOUNTING FACE, SEE SIDE VIEW.
3. COLOR: PANTONE REFLEX BLUE
4. ALL THREE LEAD LENGTHS TO BE WITHIN 2mm OF EACH OTHER.
5. MINIMUM END PLAY: 0.063mm  
MAXIMUM END PLAY: 0.188mm

UNLESS OTHERWISE SPECIFIED DIMENSIONS ARE IN MILLIMETERS		CAD GENERATED DRAWING, DO NOT MANUALLY UPDATE		Medusa Research, Inc. 288 Plymouth Avenue Fall River, Massachusetts, 02721-4226	
TOLERANCES ARE: FRACTIONS DECIMALS ANGLES XX/YY Z.ZZ ±0.05 XXXX ±0.025		APPROVALS	DATE	<b>ASSEMBLY, TOP, 5mm, 36x80mm MOTOR</b>	
MATERIAL		DRAWN			
FINISH		CHECKED			
DO NOT SCALE DRAWING		RESP ENG			
		MFG ENG			
		QUAL ENG		SIZE/DWG. NO. B 831A00399	REV. 1
		SCALE 1:1	CAD FILE: 831A00399.DWG	SHEET 1 OF 3	