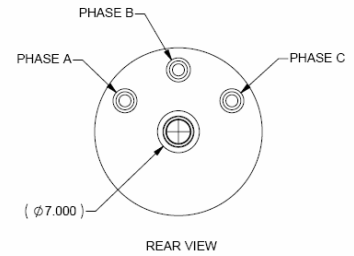
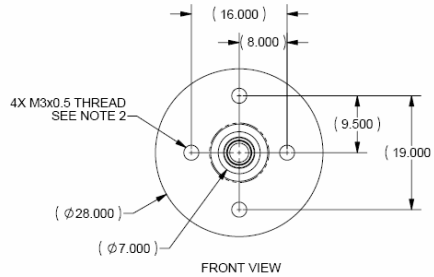
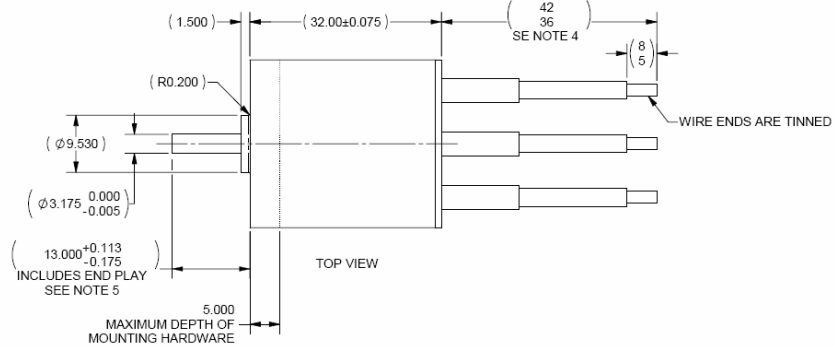


# MR-028-032-1200



MR-028-032-1200	
Dimension (D x L)	28mm x 32mm
Shaft Diameter	3.17 mm
Weight	70g
Kv	1200 RPM/V
Io @ 8V	0.35A
Rm	137 mOhm
Pin	206W
I / Imax	13A / 16A
Vmax	50V
Recommended Model Weight	600 to 1300g



- \* Designed in the USA by Medusa Research's experienced electric motor engineers
- \* Created with cutting edge computer simulation and years of real-world testing
- \* Two piece case construction for better endurance
- \* Quality construction, materials and workmanship
- \* High speed ball bearings rated at 60,000 RPM
- \* Higher efficiency and power means better performance



Battery	Volts	Gearing	Prop	Amps	Prop RPM	Pitch Speed	Thrust	Power	Efficiency
4s LiPo 2200	14.8 V	Direct	APC 7x5E	13.3 A	14,178	67 MPH	30 oz	182 W	84%
4s LiPo 2200	14.8 V	3.3:1	APC 14x12E	13.9 A	4,249	48 MPH	46 oz	189 W	84%

*Afterburner motors can provide more power, higher efficiency, and longer flight times than other brushless motors.*