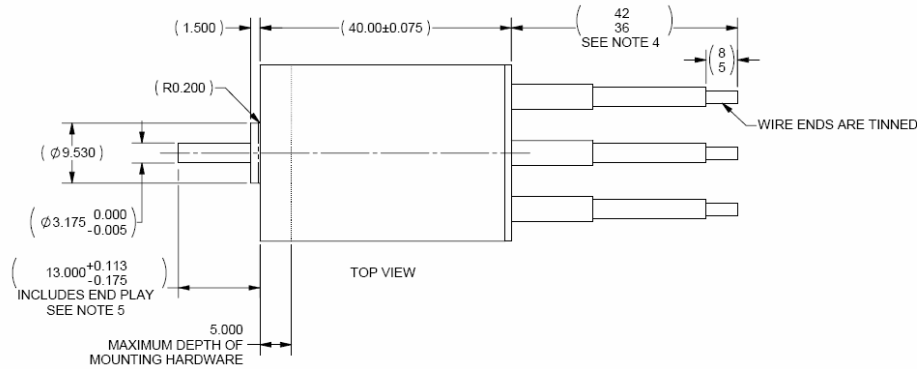
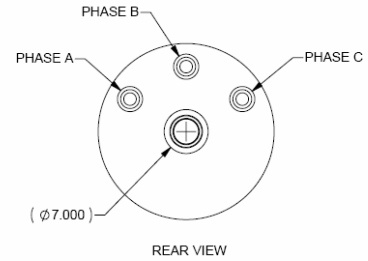
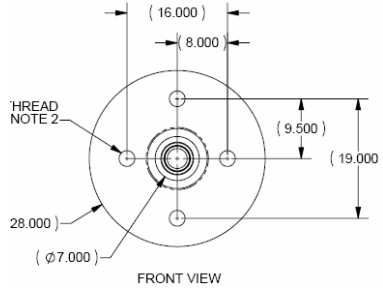


MR-028-040-1700



MR-028-040-1700	
Dimension (D x L)	28mm x 40mm
Shaft Diameter	3.17 mm
Weight	100g
Kv	1700 RPM/V
Io @ 8V	0.85A
Rm	36 mOhm
Pin	302W
I / Imax	26A / 31A
Vmax	35V
Recommended Model Weight	1000 to 1900g

- * Designed in the USA by Medusa Research's experienced electric motor engineers
- * Created with cutting edge computer simulation and years of real-world testing
- * Two piece case construction for better endurance
- * Quality construction, materials and workmanship
- * High speed ball bearings rated at 60,000 RPM
- * Higher efficiency and power means better performance



Battery	Volts	Gearing	Prop	Amps	Prop RPM	Pitch Speed	Thrust	Power	Efficiency
3s LiPo 3300	11.1V	Direct	APC 8x4E	27.4 A	14,629	55 MPH	42 oz	263 W	87%
4s LiPo 3300	14.8 V	3.3:1	APC 13x10E	26.1 A	6,188	59 MPH	66 oz	337 W	90%
4s LiPo 3300	14.8 V	4.4:1	APC 16x12E	28.7 A	4,530	52 MPH	79 oz	367 W	89%

Afterburner motors can provide more power, higher efficiency, and longer flight times than other brushless motors.